

Cranston High School East

899 Park Avenue Cranston, RI 02910
(401)270-8126

NESBA Winter Activities Competition @ Cranston High School East

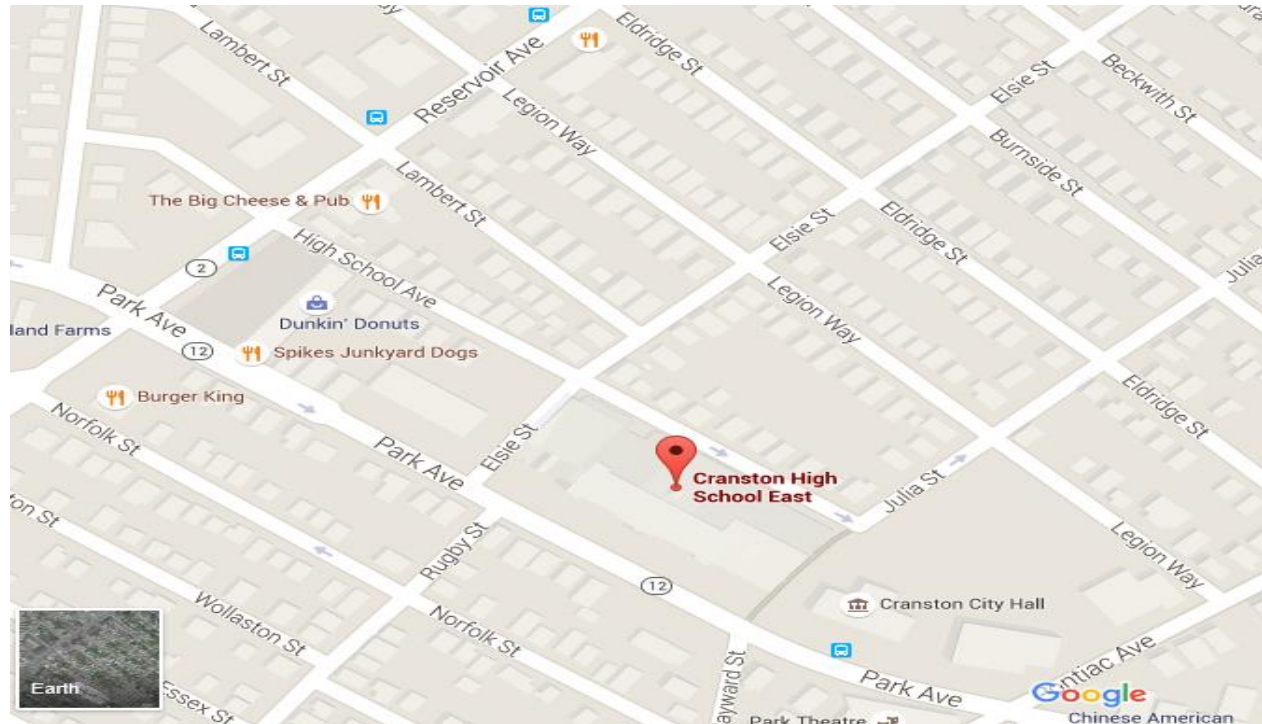
Welcome!

We are delighted that your marching band is participating in the 2023 Cranston High School East Indoor Percussion and Color Guard Competition in Cranston, Rhode Island on Saturday, March 11 at 5 pm. We are happy to once again be hosting this event with such talented groups!

Please arrive 1 hr and 15 min prior to your performance time to ensure a smooth and timely event.

Directions to Cranston High School East

<https://www.google.com/maps/place/Cranston+High+School+East/@41.7803423,-71.4399297,17z/data=!3m1!4b1!4m2!3m1!1s0x89e44f0e7d6c4725:0x38438bf7ee123ae9>

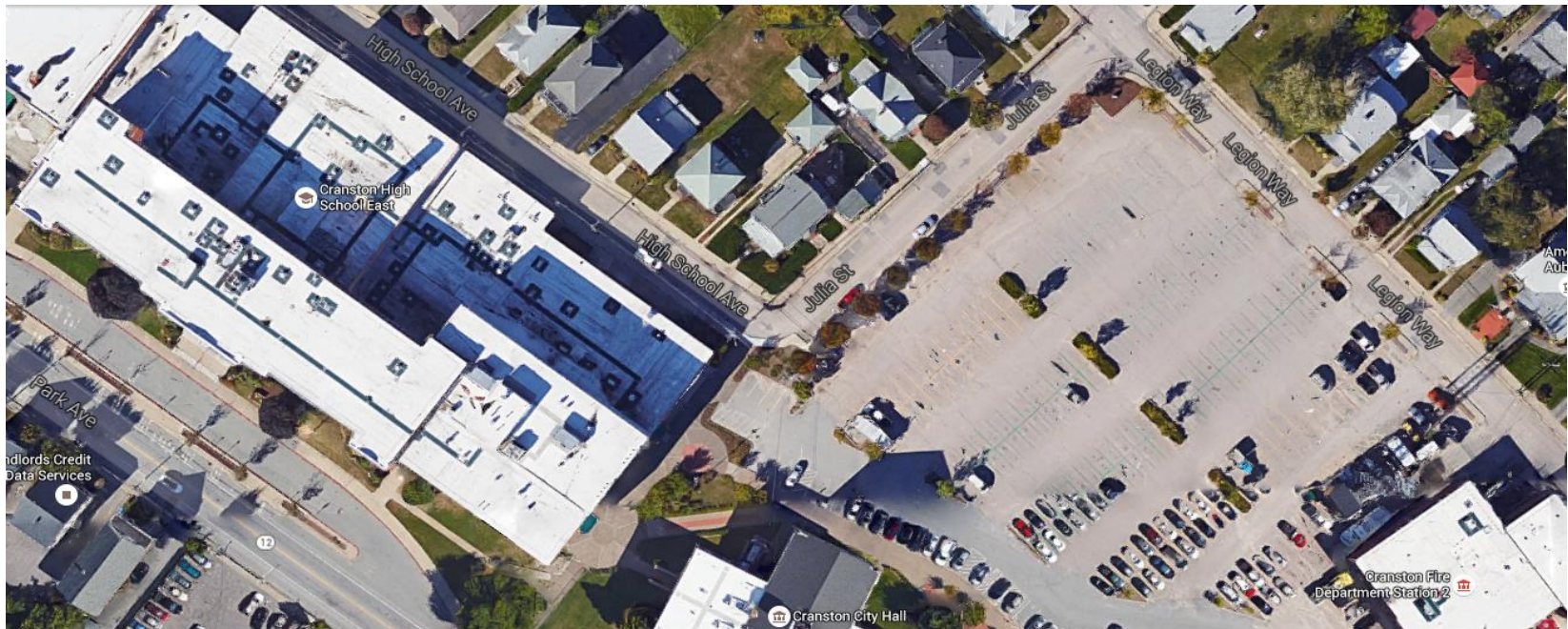


Upon Arrival:

- **Equipment Trucks**—From Reservoir Avenue, turn onto High School Avenue. (**Baja's** is on the corner.) To the left as you reach the school you will pass two sets of green doors. Right past those green doors is a white garage door – park and unload equipment in this area.
- **Student Busses/Student Drop Off** – From Reservoir Avenue, turn onto Park Avenue. (Major Intersection. At the corner you need to turn you will see Burger King and a Plaza with Baja's, Subway, Dunkin Donuts...) Going down Park Avenue you will see Cranston High School East to your left. When you reach the next Traffic Light you will turn left onto Pontiac Avenue. There will be a sign to turn in and Parking Attendants who will assist you with drop off.
- **Bus Parking**—After dropping off students, After unloading, parking for Equipment Trucks will be directly behind the school and is clearly visible. There will be Parking Attendants available to assist you and areas will be clearly marked.
- **Public/Handicapped Parking** – Located behind Cranston City Hall.

Warm-up and Practice Areas

- Practice areas are located inside the school and are clearly marked. An escort will meet your band at the door and acquaint you with where your area is located. Directors will also check-in with your Band Packet at that time.



Additional Event Details

- Ticket prices for the public are \$10.00 for adults and \$8.00 for students. Event programs will be available.
- School restrooms are open throughout the Event for students and staff.
- The Judges Room will be located near the cafeteria and is exclusively available to NESBA Judges,
- Please enjoy food and drink from our food truck: Haven Brothers, located just outside the gym, and our bake/snack table.
- Emergency medical response will be on call.
- Please remember that there is **NO FOOD OR DRINK ALLOWED** in the Gymnasium.
- We invite captains to take the floor for awards after percussion and guard segments of the competition.

On behalf of Cranston Cranston Combined Percussion , we hope everyone has an enjoyable time and we wish you the best in your performance.

If you have any questions, please do not hesitate to contact Cranston High School East's Director of Bands , Gregory Arsenault, at garsenault@cpsed.net (401)486-5150

Cranston High School East
Music Department
899 Park Avenue
Cranston, RI 02910

INVOICE

NESBA Show 3/11/2023

NESBA Show Fee - April 2, 2022 Cranston High School East

\$75 per group

Units _____

Total _____

Please make checks payable to:

Cranston East Band
899 Park Ave
Cranston, RI 02910