



899 Park Avenue, Cranston, RI 02910



Percussion Evaluation / Clinic and Indoor Activities Competition @ Cranston High School East

Welcome! We are delighted that your group is participating in a 2024 NESBA event at Cranston High School East.

Please plan to arrive at least 1 hour and 15 minutes before your performance to ensure a smooth and timely event.

Directions to Cranston High School East

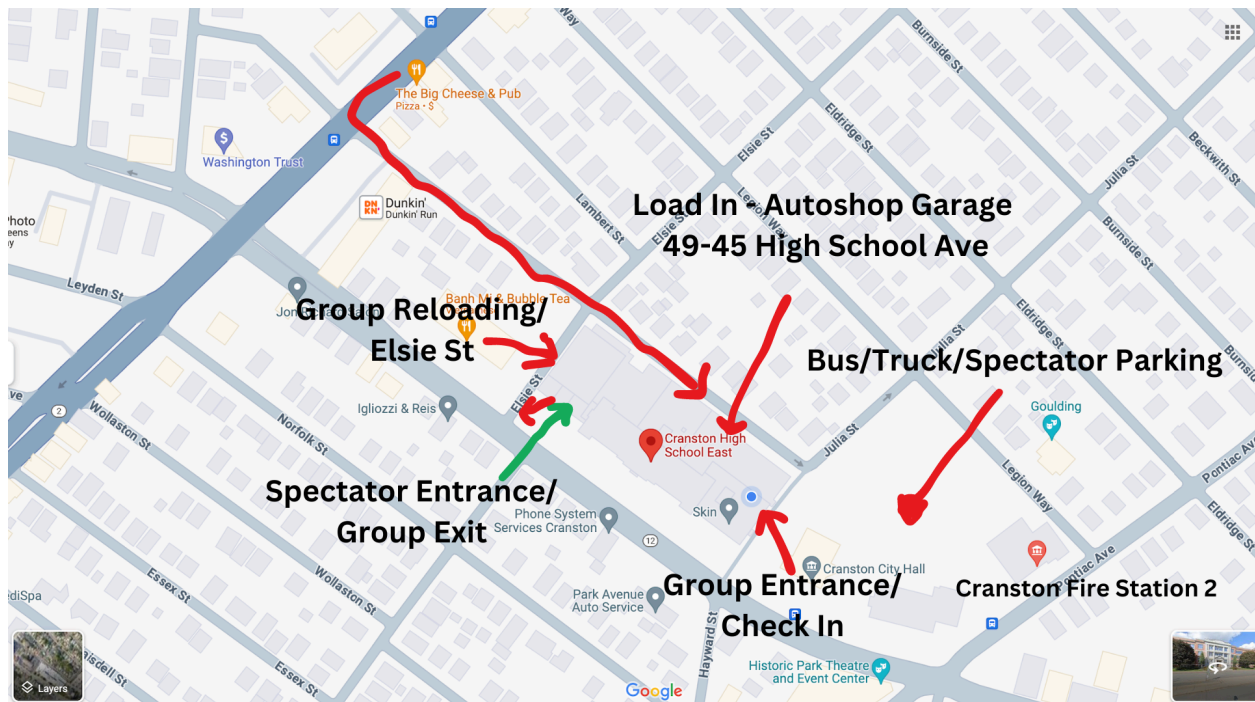
📍 Cranston High School East

For load-in use 49-45 High School Avenue in your GPS:

📍 45 High School Ave

For Bus / Truck / and Spectator Parking - the lot is behind Cranston City Hall / Cranston Public Schools Administration and

📍 Cranston Fire Department Station 2



Upon Arrival:

Equipment trucks - from Reservoir Ave, turn left onto High School Ave. Baja's/Subway/Dunkin' is on the corner. To the right you will pass sets of green doors. Past those green doors is an overhead garage door. Park and unload equipment in this area.

Student Busses/Drop off - from Reservoir Ave, turn left onto Park Ave, Burger King is on the corner. Going down Park Ave. you will see Cranston High School East on your left. Continue past the school to the next light. Turn left onto Pontiac Ave. and left into the parking lot behind the CPS Administration building. The Group Entrance is behind Cranston City Hall.

Bus/Truck Parking - busses and trucks will park in the lot behind Cranston City Hall, CPS Administration, and Cranston Fire Station 2

Handicapped Parking - is located behind Cranston City Hall. Parking may be available on Park Ave. proper in front of Cranston East.

Check-In / Warm-up Areas - student escorts will be available to guide your group through Cranston East to your warm up rooms and to the gym. Director check in is at the Group Entrance door.

Green Rooms - rooms will be assigned to each group for changing into costumes and light storage.

Large Equipment / Prop-Floor Storage - percussion equipment will be stored in the hallways on the first floor. **Props and Floors** will be stored in a section of the Main Cafeteria and in the Hallway adjacent to the Gym. Guides and show staff will direct you to your rooms and storage areas.

Additional Event Details

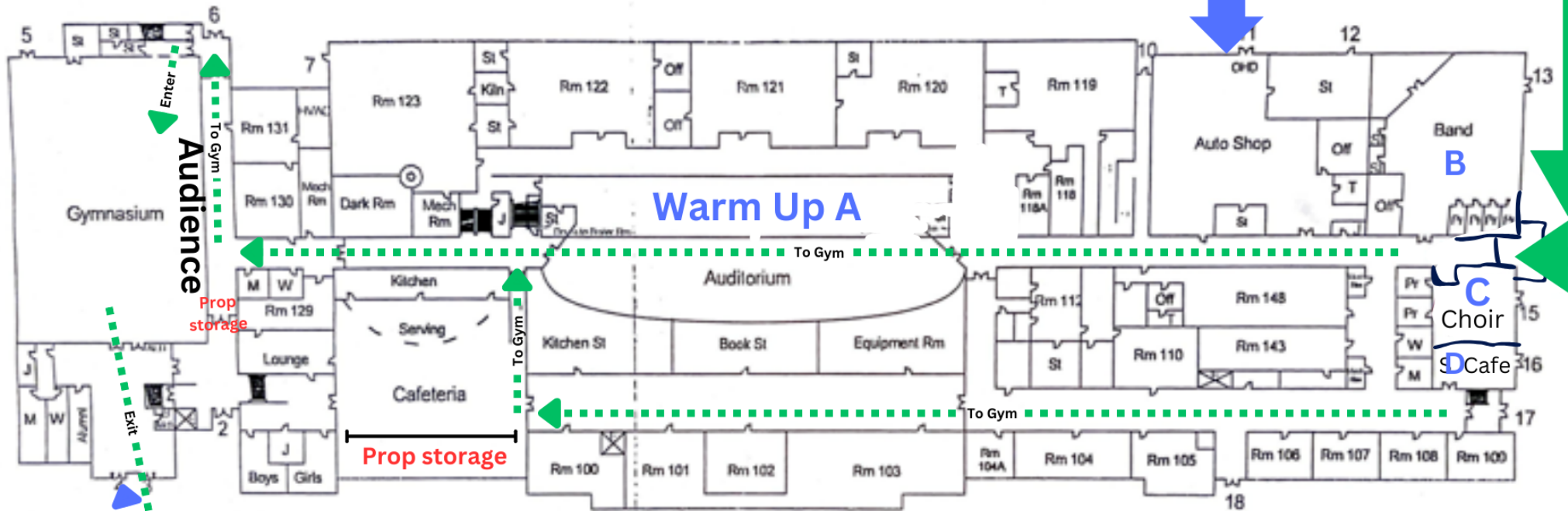
- Ticket prices for the public: \$15 general admission, \$10 for students/Seniors
- Please make parent volunteers aware that they cannot enter the gym without paying the ticket price or displaying a NESBA badge.
- Programs will be available by QR code. A limited number of hard copies will be available.
- The Judges Room is located next to the Main Cafeteria and is exclusively for NESBA Judges and show staff.
- Please enjoy food and drink from our concessions tables in the foyer and food trucks: Big Dog Eats and Pam's Grill, located just outside the gymnasium on the Park Ave. side of the school.
- Please remember - **NO FOOD OR DRINK ALLOWED IN THE GYM!**
- We invite captains to take the floor for guard and percussion awards.

If you have any questions or concerns, please do not hesitate to contact: Greg Arsenault-Director of Cranston Combined Percussion
garsenault@cpsed.net (401) 486-5150

High School Ave

Load-In

Group Entrance/
Check In



Audience

Warm Up A

Auditorium

Choir

Cafe

Food Trucks

Park Ave

Spectator
Entrance

Enter

To Gym

Prop storage

To Gym

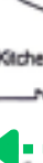
Prop storage

To Gym

To Gym

Exit

Elsie St



Cranston High School East
899 Park Avenue
Cranston, RI 02910

INVOICE

NESBA Indoor Activities Competition

2/17/24

\$100

X

Number of groups _____

3/16/24

\$100

X

Number of groups _____

Total _____ \$ _____

Please make checks payable to:

Cranston East Music Department