



Fitchburg High School

140 Arnhow Farm Road
Fitchburg, MA 01420
fhs.fitchburg.k12.ma.us
(978) 345 - 3240

Dear Directors and Families,

Welcome to the 2026 NESBA Winter Percussion and Winter Winds Finals at Fitchburg High School. We are thrilled to host you and applaud all your tremendous work through the season! Please read the information contained in this packet for details regarding the show. The enclosed maps detail parking logistics and the interior of the building to assist you as you arrive and enjoy the show.

DATE OF CONTEST: Saturday April 11, 2026

SHOW SITE: Fitchburg High School
140 Arnhow Farm Road
Fitchburg, MA 01420

START TIME: 1:00PM

Fitchburg High School will open to performers at 10:30am and spectators at 12 noon

We ask that no groups arrive to unload prior to their designated unload time. Groups arriving prior to their designated unload time may be asked to wait at the overflow parking lot.

ADMISSION: THIS IS A CASH ONLY EVENT!

- General Admission - \$20
- Students and Seniors - \$15

UNIT CHECK IN AND SPECTATOR ENTRANCE

Unit check in and spectator entrance are both located at the main entrance to Fitchburg High School (at the horseshoe). All units must have a director or appointed person check in at unit check in. All units will utilize the main entrance to enter the building. Spectators will not be allowed into the school through any other door.

SPECTATOR PARKING

Spectator parking is available in the parking lots to the side and rear of Fitchburg High School. There is no spectator parking along the residential areas of Arnhow Farm Road, Billings Road, Red Raider Way, or the horseshoe driveway at the main entrance. If necessary, spectators may be directed from FHS to park at the overflow parking lot. No spectators should park at the overflow parking lot unless directed to do so by a parking attendant at FHS. The overflow parking lot is located at The Life Church (839 Ashby State Road, Fitchburg, MA 01420). A shuttle bus is provided to transport between the overflow lot and FHS. Please see the attached maps.

BUS PARKING

Buses will turn right on the first road on campus (labeled Phil Fallon Way) and will drive past the spectator parking and equipment drop off, continuing around the building to park on Arnhow Farm Road. Buses should park on the building side of the road and leave access to any driveways or crosswalks. Once parked, performers and staff may head to the equipment unloading area and to unit check in. Please see the attached maps.

EQUIPMENT UNLOADING, RELOADING, AND PARKING

All trucks or equipment bearing vehicles will turn right on the first road on campus (labeled Phil Fallon Way) and will park adjacent to the building to unload at their designated time. Trucks or equipment bearing vehicles cannot remain in the unloading area beyond 20 minutes. Props and floors can be brought directly through the main entrance to the gym for storage. Groups arriving prior to their designated unload time may be asked to wait at the overflow parking lot (located at 839 Ashby State Road, Fitchburg, MA 01420).

Once unloaded, all trucks or equipment bearing vehicles must relocate to the designated bus and truck parking around the building. After competing, groups will wheel equipment out of the performance gym directly outside toward the reloading lot. Trucks or equipment bearing vehicles will be allowed to remain in this area only starting at their designated reloading time and until reloading has been completed. Once re-loaded, vehicles must depart the reload lot and will be directed to either park on Arnhow Farm Road around the building (labeled bus and truck parking) or will be directed to the overflow lot at The Life Church (839 Ashby State Road, Fitchburg, MA 01420). A shuttle bus is provided to transport between the overflow lot and Fitchburg High School. No truck or equipment bearing vehicle should move to the overflow lot unless directed to do so by a parking attendant. Please see the attached maps.

LOCKER ROOMS

2 locker rooms (1 male and 1 female) are available as changing spaces for performers in the hallway between the gym and cafeteria. Please ask your members not to bring valuable items into the building or leave them in the locker rooms. NESBA nor Fitchburg Public Schools are responsible for lost or stolen items. Please be respectful of Fitchburg Public Schools property.

WARM UPS

There are 3 warm up areas: Auditorium (A), Hallway (B), and Cafeteria (C). Groups must warm up in their designated areas at their designated times. Please be considerate of others and stay within your allotted warm-up time. Power will be available in all 3 warm up areas. A note for groups warming up in the auditorium: Our music department's production of "In the Heights" is in rehearsals. You will have access to the full stage but please be mindful of the set pieces that are present on the stage and in the wings.

ENTERING/EXITING THE PERFORMANCE GYM

All groups will enter the performance area from Side 2 and exit from Side 1. Groups warming up in the auditorium (A) will enter from the back of the gym on side 2. Groups warming up in the hallway (B) or cafeteria (C) will enter from the front of the gym on side 2. Please see the attached maps.

A vertical timing line will be used. Groups will exit the performance area on the back of Side 1 (behind the curtain on Side 1). Groups will exit through the double doors on the front side of the gym and immediately exit outside to the reload area.

AWARDS

There are two award ceremonies at this event. Unit leaders/captains should meet at the front of side 2 to enter the performance area. Unit members may join as the coordinator allows.

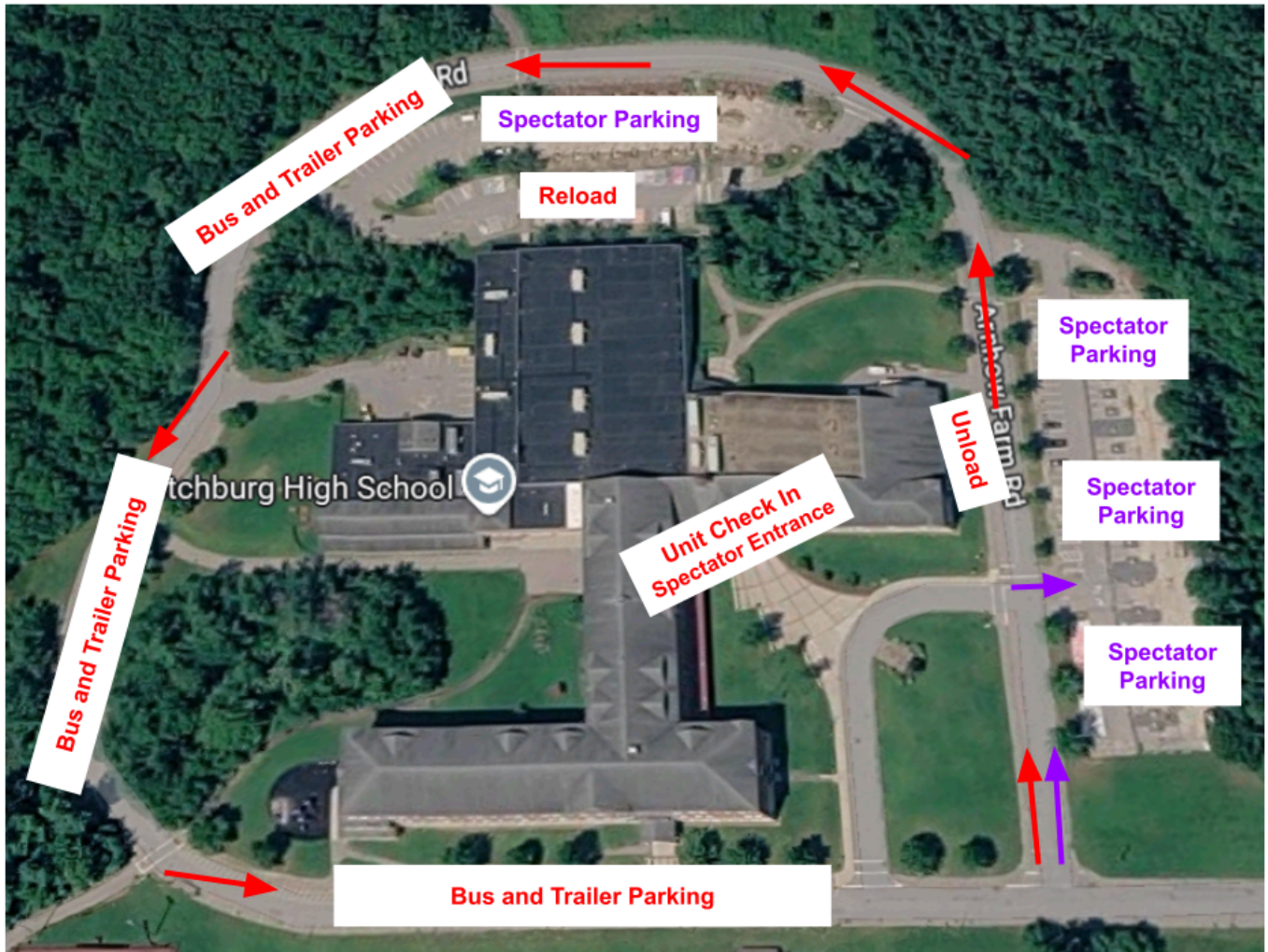
CONCESSIONS

Food will be available for purchase in the cafeteria (menu attached). Please make your members and staff aware that food will not be allowed into the gym. Our concessions are cash preferred but we will have QR codes available to pay via CashApp and Venmo.

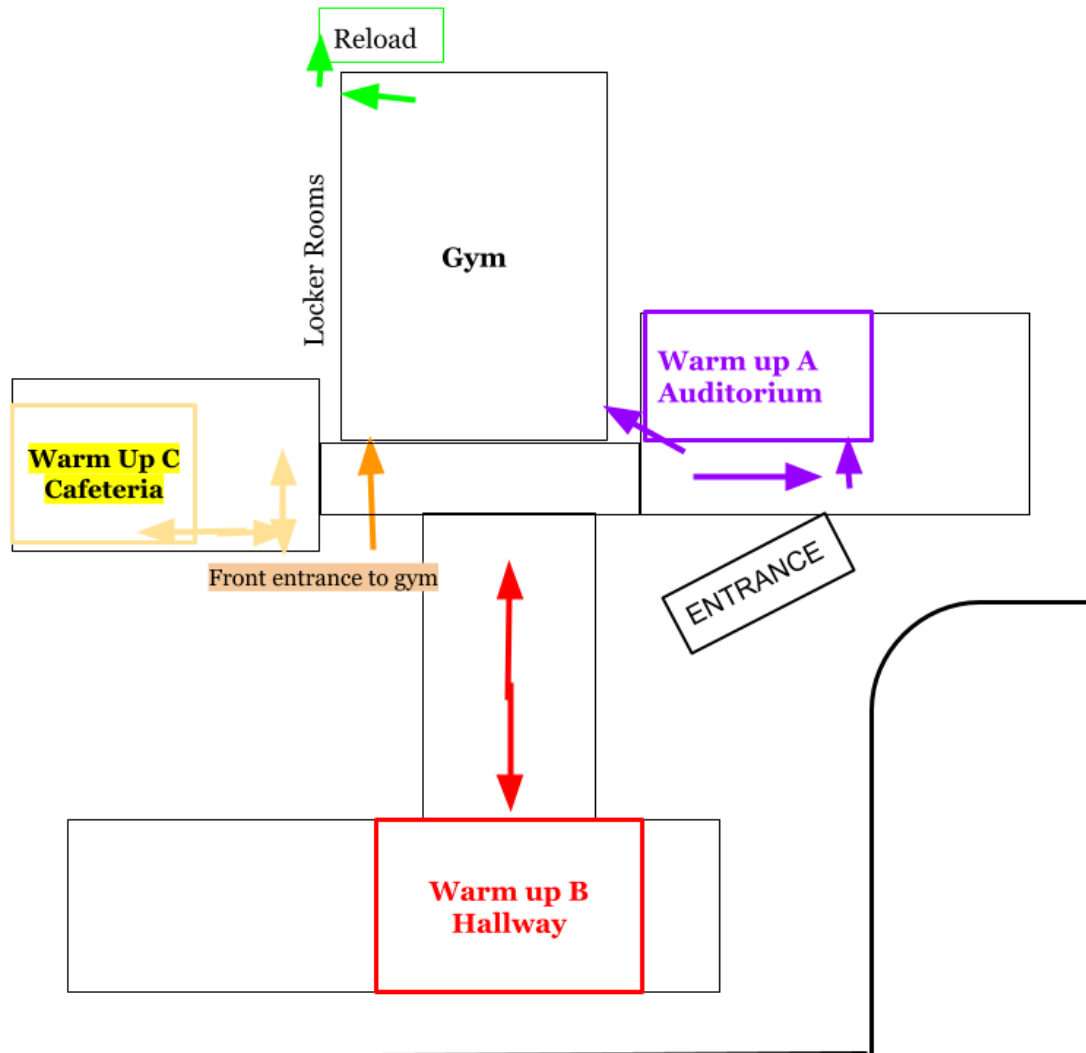
Best of luck to you today and congratulations on your successes this season!

Tabitha Greenlees, Band Director
Fitchburg High School

NESBA WINTER PERCUSSION AND WINDS FINALS PARKING DETAIL

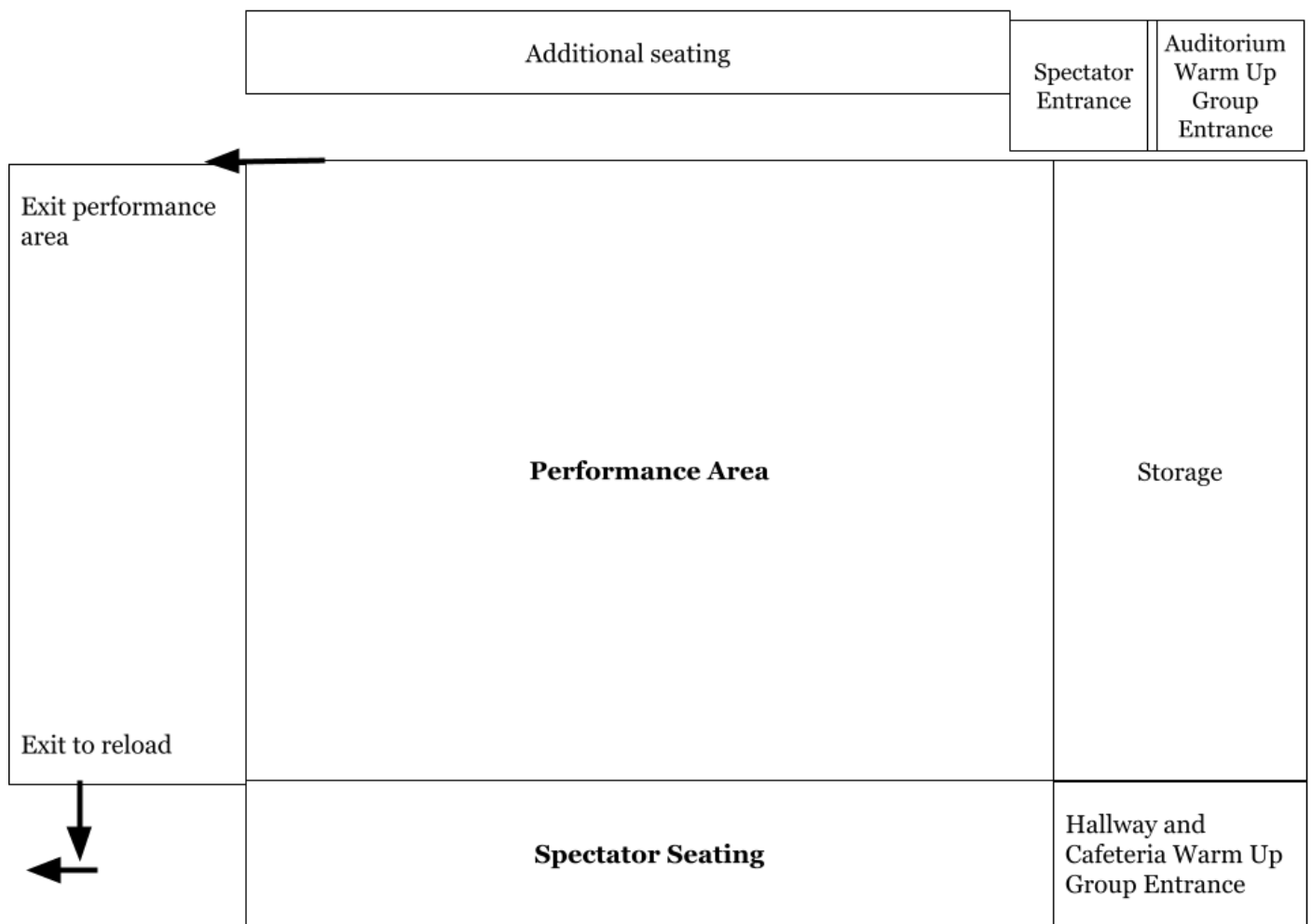


**NESBA WINTER PERCUSSION AND WINDS FINALS
INTERIOR DETAILS - WARM UPS**



NESBA WINTER PERCUSSION AND WINDS FINALS PERFORMANCE GYM ENTERING AND EXITING

All groups will enter the performance area from Side 2 and exit from Side 1
Vertical timing line will be used



FITCHBURG HIGH SCHOOL, 140 ARNHOW FARM ROAD, FITCHBURG, MA 01420

NESBA INDOOR FINALS OVERFLOW PARKING LOT DETAIL

No one should park at the overflow lot unless directed to do so by a parking attendant at
Fitchburg High School

Overflow parking is located at

The Life Church, 836 ASHBY STATE ROAD, FITCHBURG, MA 01420

A shuttle bus is provided to transport between the overflow lot and Fitchburg High School



MENU

CHICKEN TENDERS	\$7
CHEESE PIZZA	\$4
HOT DOG	\$3
FRESH BAKED COOKIES	\$2
CANDY	\$2.50
POPCORN	\$1
CHIPS	\$1
WATER	\$1
SODA/SELTZER	\$2
GATORADE	\$2



Fitchburg High School Band and our Band Parents Association thank you!

